



Ethelred Nursery School Children's Centre Newsletter



October 2022 Autumn Term

Welcome to the first Ethelred Newsletter of this year. We are very excited to welcome all our new families and seeing our familiar friends. As we are settling into the Autumn term, your little ones will enjoy their learning using our continuous provision model. Continuous provision is **allowing children the freedom to explore and become independent in making choices** whilst they learn and play. If you have any questions please feel free to speak to your child's Keyworker. Thank you for all of your support and patience throughout the settling in process.

Physical development

We will be learning to:

Explore large movement in the playground



Use various equipment to support our movement.



Personal, Social and Emotional Development

We will be learning to:

Build new relationships and learning about the Nursery routine.



Key language: story time, tidy up time, now, next, snack time. etc

Communication & Language

We will be learning to:

Orange Room

Listen to simple stories

Singing nursery rhymes

Green Room

Listening to and recall familiar stories.

Understand a two part instruction



Maths

We will be learning to:

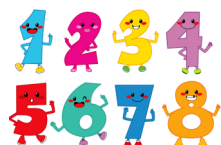
Orange Room

Exploring maths using the water, jugs and containers.

Green Room

Sorting objects

Counting objects



Literacy

We will be learning to:

Make marks using different resources such as:

- Paint
- Colouring pencils
- Chalk



Understanding the world

We will be learning to:

- Celebrate Black History Month.
- Reading a range of stories



Expressive Arts and Design

We will be learning to:

Exploring new concepts and materials

We will explore:

- Music
- Junk modelling
- Mixing colours





Ethelred Nursery School Children's Centre Newsletter



Dates to remember

Below are listed a few key dates coming up before the Christmas holidays, and the dates for returning to school in January:

Thursday 20th October Last day for children

Friday 21st October Parent conferencing

HALF TERM HOLIDAY
(Monday 24th October-Friday 28h October)

Monday 31st October Inset day

Tuesday 1st November Children start

Friday 16th December Last day for all children

CHRISTMAS HOLIDAY
(Monday 19th December-Monday 2nd January)

CHILDREN'S CENTRE CLOSURE
(TBC)

Tuesday 3rd January 2023 Inset day

Wednesday 4th January Home visits for new families

Thursday 5th January Children start

Voluntary School Fund

£1 contribution is collected every Wednesday.

This will help us pay for fruit and outings.



Children's Centre

Our Children's Centre timetable is available at reception.

This details the various activities available for under 5's across our cluster.

We also have a number of courses on offer for parents and families. Information about these is available at reception.

Please remember

AM: 8:45 am-11:45pm

PM: 12:45pm-3:45pm

FT: 9:15am-3:15pm

If your child is going to be late or can not attend Nursery.

Please do contact Reception

Nursery Contact number: 020 7582 9711

Email :

admin@ethelred-nursery.lambeth.sch.uk

Spaces available

We currently have nursery spaces available.

Please pass the message onto fellow parents and carers.

Thank you for your continued support. For more details about our Nursery visit:

[Ethelred Nursery School & Children's Centre - Welcome](#)